



2015

# PROFESSIONAL WORKWEAR & SHOES





by



# A RANGE OF PROFESSIONAL WORKWEAR



DICKIES are the largest privately owned workwear company in the world. Since starting out in 1922 DICKIES have become a global brand through their dedication to innovation and customer service.

The garments DICKIES manufacture today stand for the quality, toughness, and pride of the professional worker offering protection and style far into the future. Ninety years of integrity and excellence have made DICKIES the trusted global leader in full service workwear solutions.



FACOM has enhanced its range of industrial and automotive products with this selection of professional workwear designed and produced by DICKIES.

## T-SHIRTS

## T-SHIRT LOGO EVO

FABRIC: 100% cotton, 180g.



**SIZES:**

S > VP.TS1-SPB  
 M > VP.TS1-MPB  
 L > VP.TS1-LPB  
 XL > VP.TS1-XLPB  
 2XL > VP.TS1-2XLPB

NEW



## T-SHIRT SPECIAL AUTO

FABRIC: 100% cotton, 180g.

**SIZES:**

S > VP.TS3-SPB  
 M > VP.TS3-MPB  
 L > VP.TS3-LPB  
 XL > VP.TS3-XLPB  
 2XL > VP.TS3-2XLPB

NEW

## T-SHIRT I CARS

FABRIC: 100% cotton, 180g.



**SIZES:**

S > VP.TS2-SPB  
 M > VP.TS2-MPB  
 L > VP.TS2-LPB  
 XL > VP.TS2-XLPB  
 2XL > VP.TS2-2XLPB

NEW



## T-SHIRT OLD WRENCHES

FABRIC: 100% cotton, 180g.

**SIZES:**

S > VP.TS5-SPB  
 M > VP.TS5-MPB  
 L > VP.TS5-LPB  
 XL > VP.TS5-XLPB  
 2XL > VP.TS5-2XLPB

NEW



## POLOS

### GREY POLO

- 3 button neck.

**FABRIC:** 100% cotton, 200g.

#### SIZES:

- S > **VP.POLOGR-SPB**  
 M > **VP.POLOGR-MPB**  
 L > **VP.POLOGR-LPB**  
 XL > **VP.POLOGR-XLPB**  
 2XL > **VP.POLOGR-XXLPB**



### RED POLO

- 3 button neck.

**FABRIC:** 65% polyester / 35% cotton, 180g.

#### SIZES:

- S > **VP.POLORED-SPB**  
 M > **VP.POLORED-MPB**  
 L > **VP.POLORED-LPB**  
 XL > **VP.POLORED-XLPB**  
 2XL > **VP.POLORED-XXLPB**



## MICRO FLEECE TWO TONE GREY/BLACK

- Micro fleece fabric for warmth.
- Thumb hole on cuff.
- Close fit ideal for layering.

**FABRIC:**  
 100% polyester micro fleece, 260gsm.

#### SIZES:

- S > **VP.POL-SPB**  
 M > **VP.POL-MPB**  
 L > **VP.POL-LPB**  
 XL > **VP.POL-XLPB**  
 2XL > **VP.POL-2XLPB**



## HOODY

- Classic shape.
- Red drawstring hood.
- Red lined hood with eyelets for phone cord.
- Elasticated cuffs and waistband.
- Hidden phone pocket inside front pocket.

**FABRIC:** 50% cotton / 50% polyester, 340g.

### SIZES:

S	> VP.HOODY-SPB
M	> VP.HOODY-MPB
L	> VP.HOODY-LPB
XL	> VP.HOODY-XLPB
XXL	> VP.HOODY-XXLPB



## SOFTSHELL



- Waterproof and breathable until 8 000 mm and 1000 mvp.
- 2 side pockets with zip.
- Lateral adjustment with elastic drawcord.
- Velcro adjustable cuffs.

**FABRIC:** 94 % polyester, 6 % élasthane.



### SIZES:

S	> VP.SOFT-SPB
M	> VP.SOFT-MPB
L	> VP.SOFT-LPB
XL	> VP.SOFT-XLPB
XXL	> VP.SOFT-XXLPB

## SWEAT SHIRT



- ZIP.
- Ribbed hem & cuff.

**FABRIC:** 50% cotton, 50% polyester, 280gsm.

**NEW**

### SIZES:

S > **VP.ZSWEAT-SPB**  
M > **VP.ZSWEAT-MPB**  
L > **VP.ZSWEAT-LPB**  
XL > **VP.ZSWEAT-XLPB**  
XXL > **VP.ZSWEAT-2XLPB**

## BODY WARMER

- Adjustable hem.
- Internal pocket.
- 2 sides pockets.

**FABRIC:** Nylon taslan ripstop AC, 220T.

### SIZES:

S > **VP.BODYW-SPB**  
M > **VP.BODYW-MPB**  
L > **VP.BODYW-LPB**  
XL > **VP.BODYW-XLPB**  
XXL > **VP.BODYW-2XLPB**



**NEW**



## JACKET

- Side entry lower pockets.
- Action back pleats.
- Waist adjusters.

**FABRIC:**

60% cotton, 40% polyester, 280gsm.

**SIZES:**

- S > **VP.JACK2-SPB**  
 M > **VP.JACK2-MPB**  
 L > **VP.JACK2-LPB**  
 XL > **VP.JACK2-XLPB**  
 XXL > **VP.JACK2-2XLPB**

**NEW**

## PANTALON



Sizes	S	M	L	XL	XXL	XXXL	XXXXL
	40	42	44	46	48	50	52

**SIZES:**

- S > **VP.PANTA2-SPB**  
 M > **VP.PANTA2-MPB**  
 L > **VP.PANTA2-LPB**  
 XL > **VP.PANTA2-XLPB**  
 2XL > **VP.PANTA2-2XLPB**  
 3XL > **VP.PANTA2-3XLPB**  
 4XL > **VP.PANTA2-4XLPB**

**FABRIC:**

60% cotton, 40% polyester, 280gsm.

- Reflective piping.
- Self fabric bottom loading knee pad pockets.
- Double layer hem guard.
- Hammer Loop.
- Shaped back waistband for comfort.
- Ruler pocket.

**NEW**



## OVERALLS

### COVERALL

- 2 way metal zip with buttoned top opening.
- 2 breast pockets with zip.
- 2 large back pockets with flap, 1 with zip.
- 1 meter pocket.
- 1 tool holder pocket.

- 2 side pockets with side opening.
- Double pen pocket on sleeve.
- Full elastic waist.
- Knee pads pockets.

**FABRIC:** 65% polyester, 35% cotton, 260 g.

<b>SIZES :</b>	S	> VP.COMB-SPB
	M	> VP.COMB-MPB
	L	> VP.COMB-LPB
	XL	> VP.COMB-XLPB
	XXL	> VP.COMB-XXLPB

Sizes	S	M	L	XL	XXL
	42	44	46	48	50



## TROUSERS

- Multi pocket trousers.
- Tool holder pocket.
- Knee pads pocket with velcro closure.
- Meter and cargo pocket.
- Back pocket.
- Hammer loop.
- Reinforced back pockets.

**FABRIC:** 65% polyester, 35% cotton, 260gsm.

<b>SIZES :</b>	S	> VP.PANTA-SPB
	M	> VP.PANTA-MPB
	L	> VP.PANTA-LPB
	XL	> VP.PANTA-XLPB
	2XL	> VP.PANTA-XXLPB
	3XL	> VP.PANTA-XXXLPB
	4XL	> VP.PANTA-XXXXLPB



Sizes	S	M	L	XL	XXL	XXXL	XXXXL
	40	42	44	46	48	50	52



## KNEEPADS

Set of 2 protection kneepads for overalls VP.COMB and trousers VP.PANTA.

**VP.PANTA-PADSPB**





## OVERALL

- Two full length YKK zips.
- One chest pocket and one mobile phone pocket.
- Ruler and cargo pocket.
- Two lower double pockets.
- Elasticated waistband at back.

**FABRIC:** 100% cotton

<b>SIZES:</b>	S	> <b>VP.COMB2-SPB</b>
	M	> <b>VP.COMB2-MPB</b>
	L	> <b>VP.COMB2-LPB</b>
	XL	> <b>VP.COMB2-XLPB</b>
	2XL	> <b>VP.COMB2-2XLPB</b>

NEW



## CLASSIC PROFESSIONAL SHOES

- Composite toe cap to EN20345 (200 Joules).
- Non-metallic anti-penetration sole.
- Water resistant upper.



- Breathable mesh lining.
- Flexible dual density PU/PU outsole.
- 100% non-metallic design.
- Padded tongue and collar.
- Anti-static and heat resistant sole.
- Sole slip resistant to SRA standard.
- Oil resistant sole.
- Shock absorbent heel.

## SIZES:

39	> <b>VP.CLASSIC-39PB</b>
40	> <b>VP.CLASSIC-40PB</b>
41	> <b>VP.CLASSIC-41PB</b>
42	> <b>VP.CLASSIC-42PB</b>
43	> <b>VP.CLASSIC-43PB</b>
44	> <b>VP.CLASSIC-44PB</b>
45	> <b>VP.CLASSIC-45PB</b>



## CITY PROFESSIONAL SHOES



NEW

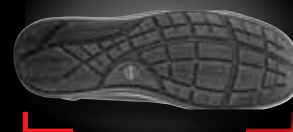
EN ISO 20345: 2011 S1-P SRC

- Composite toe cap to EN ISO 20345 (200 Joules).
- Non-metallic anti-penetration midsole.
- Breathable fabric lining.
- Lightly padded.
- Dual density PU/PU outsole.
- Removable EVA foobed.
- Antistatic.
- Oil resistant sole.

**MATIÈRE :** Canvas

## SIZES:

39	> <b>VP.CITY-39PB</b>
40	> <b>VP.CITY-40PB</b>
41	> <b>VP.CITY-41PB</b>
42	> <b>VP.CITY-42PB</b>
43	> <b>VP.CITY-43PB</b>
44	> <b>VP.CITY-44PB</b>
45	> <b>VP.CITY-45PB</b>



## HITREK PROFESSIONAL SHOES

EN ISO 20345: 2004/A1: 2007 S3 SRA

- Water resistant upper.
- Composite toe cap to EN20345 (200joules).
- Non-metallic anti-penetration sole.
- Padded collar and tongue.
- Lightweight EVA / Rubber Outsole.
- Shock absorbent heel.

- Oil resistant sole.
- Metal free.

**FABRIC:** Mesh & Microfiber.



### SIZES:

- |    |   |                |
|----|---|----------------|
| 39 | > | VP.HITREK-39PB |
| 40 | > | VP.HITREK-40PB |
| 41 | > | VP.HITREK-41PB |
| 42 | > | VP.HITREK-42PB |
| 43 | > | VP.HITREK-43PB |
| 44 | > | VP.HITREK-44PB |
| 45 | > | VP.HITREK-45PB |

**NEW**

## TREK PROFESSIONAL SHOES

EN ISO 20345: 2004/A1 : 2007 S3 SRA

- Composite toe cap to EN20345 (200joules).
- Non-metallic anti-penetration sole.
- Padded collar and tongue.
- Lightweight EVA / Rubber Outsole.
- Shock absorbent heel.
- Oil resistant sole.
- Metal free.
- Water resistant upper.

**FABRIC:** Mesh & Microfibre.



### SIZES:

- |    |   |              |    |   |              |
|----|---|--------------|----|---|--------------|
| 36 | > | VP.TREK-36PB | 42 | > | VP.TREK-42PB |
| 37 | > | VP.TREK-37PB | 43 | > | VP.TREK-43PB |
| 38 | > | VP.TREK-38PB | 44 | > | VP.TREK-44PB |
| 39 | > | VP.TREK-39PB | 45 | > | VP.TREK-45PB |
| 40 | > | VP.TREK-40PB | 46 | > | VP.TREK-46PB |
| 41 | > | VP.TREK-41PB | 47 | > | VP.TREK-47PB |

## FLEX PROFESSIONAL SHOES

EN ISO 20345:2011 S3 SRA HRO

- Composite toe-cap to EN20345 (200 Joules).
- Non-metallic anti-penetration midsole.
- Breathable mesh lining.
- Lightweight full rubber outsole.
- Heat resistant sole to 300°.
- Rubber toe guard for extra durability.

**MATIÈRE :** Leather Nubuck.

<b>SIZES:</b>	39	> <b>VP.FLEX-39PB</b>
	40	> <b>VP.FLEX-40PB</b>
	41	> <b>VP.FLEX-41PB</b>
	42	> <b>VP.FLEX-42PB</b>
	43	> <b>VP.FLEX-43PB</b>
	44	> <b>VP.FLEX-44PB</b>
	45	> <b>VP.FLEX-45PB</b>

**NEW**

## SPIDER PROFESSIONAL SHOES



EN ISO 20345:2011 S1P SRA

- Steel toecap to EN20345 (200 Joules).
- Steel midsole for underfoot protection.
- Breathable mesh lining.
- Cemented rubber outsole with EV A insert.
- Heat resistant to 300°C.
- External rubber toe guard.

**FABRIC:** Cow Suede Leather & Mesh.

<b>SIZES:</b>	39	> <b>VP.SPIDER-39PB</b>
	40	> <b>VP.SPIDER-40PB</b>
	41	> <b>VP.SPIDER-41PB</b>
	42	> <b>VP.SPIDER-42PB</b>
	43	> <b>VP.SPIDER-43PB</b>
	44	> <b>VP.SPIDER-44PB</b>
	45	> <b>VP.SPIDER-45PB</b>





Official licensed merchandise by



Your dealer

